



P&S

PERERA AND SONS

ELEVATING
SRI LANKA'S
FINEST
FLAVORS

★ ★ ★
WORLDWIDE

– **PRODUCT CATALOGUE** –

www.pereraandsons.com

Partner Testimonials

"WE HAVE BEEN IMPORTING P&S PRODUCTS, WHICH ARE A HOUSEHOLD NAME IN SRI LANKA AND ACCEPTED BY THE SRI LANKAN COMMUNITY IN AUSTRALIA. P&S IS VERY ACCOMMODATING AND FLEXIBLE TO WORK WITH."

IMPORTER - AUSTRALIA

"THE P&S RANGE OF PRODUCTS IS WELL ACCEPTED BY SRI LANKAN CONSUMERS. THEIR FAVOURITE IS CHOCOLATE ROLLS."

RETAILER, PERTH

"P&S PRODUCTS ARE ADVERTISED REGULARLY ON THE RADIO, WHICH HELPED US MOVE OUT P&S PRODUCTS."

RETAILER, CLYDE NORTH

"WE BUY THE ENTIRE RANGE OF P&S PRODUCTS FROM OUR DISTRIBUTION PARTNER, WHICH COLLECTIVELY GIVES US EXCELLENT SERVICE."

RETAILER, CRANBOURNE

"FROM READY TO EAT RANGE OF PRODUCTS, CUSTOMERS PREFERRED BRAND IS P&S"

RETAILER, STATEN ISLAND, NEW YORK

"WE BUY THE ENTIRE P&S RANGE OF PRODUCTS, AND THEIR FAVORITES ARE FISH BUN, CHOCOLATE ROLL, AND FISH ROTI. THEY PROVIDE US WITH EFFICIENT SERVICE BY DELIVERING ON TIME."

RETAIL STORE, AUSTIN, TEXAS



AROUND THE
EARTH





Great
taste
Since 1902

Perera & Sons Bakers (Pvt) Ltd.

TEL : +94 11 4786386
FAX : +94 11 2792555

122-124, M.D.H Jayawardena Mawatha,
Madinagoda, Rajagiriya, Sri Lanka

WEB : www.pereraandsons.com
E-MAIL : exports@pereraandsons.com

Frozen Range

Fish Stuffed Chilli	01
Prawn Pie	02
Fish Rolls	03
Pol Rotti	04
Fish Cutlet	05
Fish Rotti	06
Fish Patty	07
Fish Bun	08
Chocolate Éclair	09
Party Platter	10
Prawn Rolls	11
Pan Bread	12
Roasted Bread	13
Seeni Sambol Bun	14
Dutch Breudher	15
Vienna Rolls	16, 17
Fish Lamprais	18
Kottu Rotti	19
Dry Seeni Sambol	20
Fish Crunchi	21

Cakes

Date Cake	29
Chocolate Ganache Cake	30
Pineapple Gateau Cake	31
Chocolate Roll	32
Opera Cake	33
Coffee Cake	34
Ribbon Cake	35
Yule Log	36
Cashew Cup Cake	37
Betle Leaf Cake	38

Biscuits

Assorted Cookies Tin	40
Rulang Cookies	41
Anoda Flower Shaped Crunch	42
Wine Biscuits	43

Vege Range (Frozen Range)

Vegetable Patty	23
Vegetable Rotti	24
Vegetable Cutlet	25
Vegetable Party Platter	26
Vegetable Rolls	27

Traditional Sweets

Helapa	45
Aasmi	46
Athirasa	47
Kokis	48
Mung Kevum	49
Konda Kevum	50



FROZEN RANGE



FISH STUFFED CHILLI

9 PIECES

INGREDIENTS:

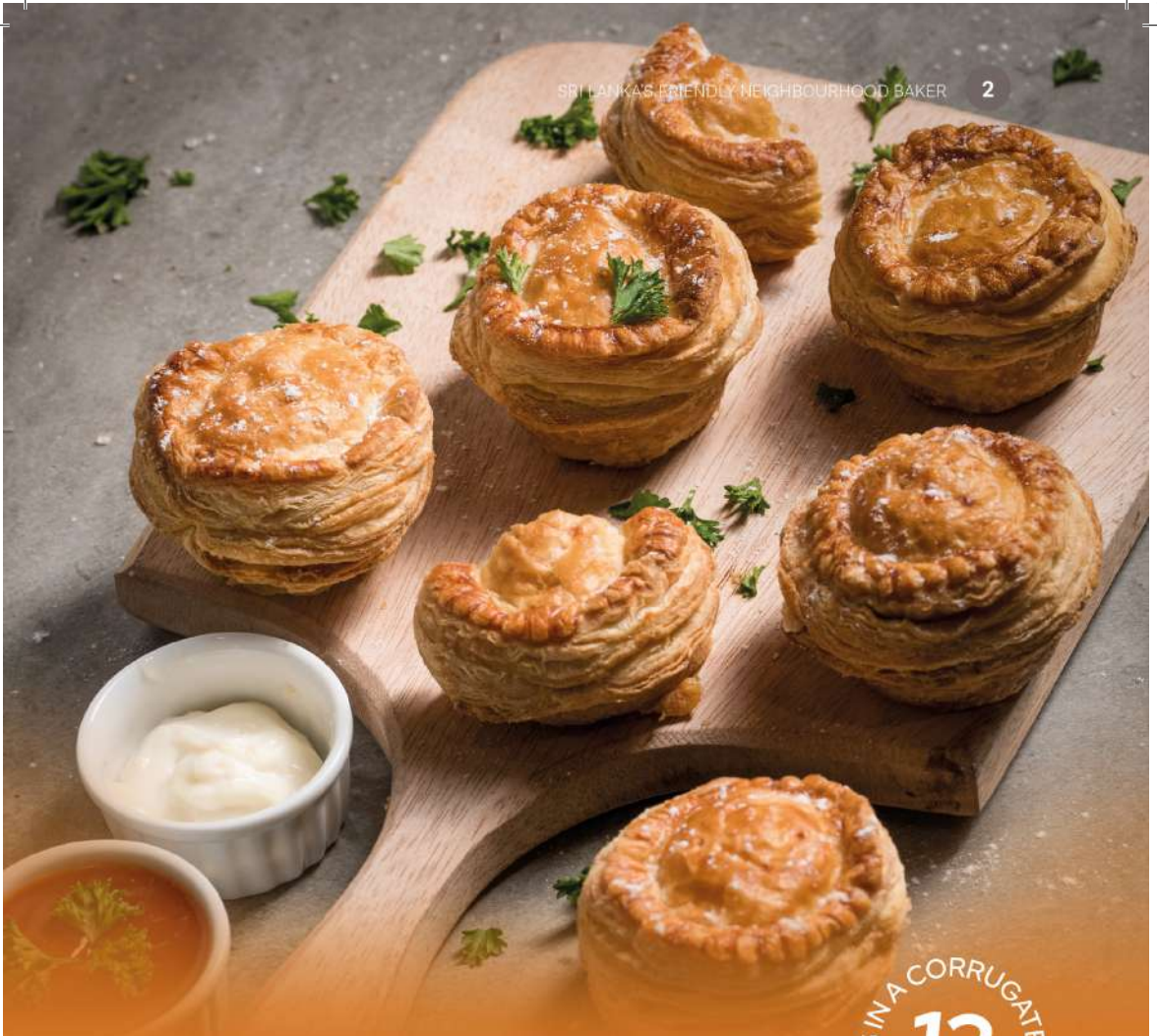
Capsicum, Vegetable oil, Fish, Wheat flour, Potato, Water, Onion, Corn flour, Curry leaves, Iodized salt, Chilli pieces, Pepper pieces, Soy sauce, Egg powder

SHELF LIFE : 24 Months

NET WEIGHT : 454g | 16.0oz

12
PACKS IN A CORRUGATED CARTON





PRAWN PIE

6 PIECES

INGREDIENTS:

Prawns, Wheat flour, Water, Onion, Margarine (Plant based), Tomato, Vegetable oil, Capsicum, Milk powder, Green chillies, Garlic, Egg powder, Iodized salt, Sugar, Pepper powder, Turmeric powder

SHELF LIFE : 24 Months

NET WEIGHT : 454g | 16.0oz

12
PACKS IN A CORRUGATED CARTON





FISH ROLLS

9 PIECES

INGREDIENTS:

Wheat flour, Water, Potato, Fish, Vegetable oil, Iodized salt, Tomato, Garlic, Onion, Ginger, Chilli powder, Green chillies, Egg powder, Curry powder, Lemon grass, Pandan leaves

SHELF LIFE : 24 Months

NET WEIGHT : 454g | 16.0oz

PACKS IN A CORRUGATED CARTON
12





POL ROTTI

6 PIECES

INGREDIENTS:

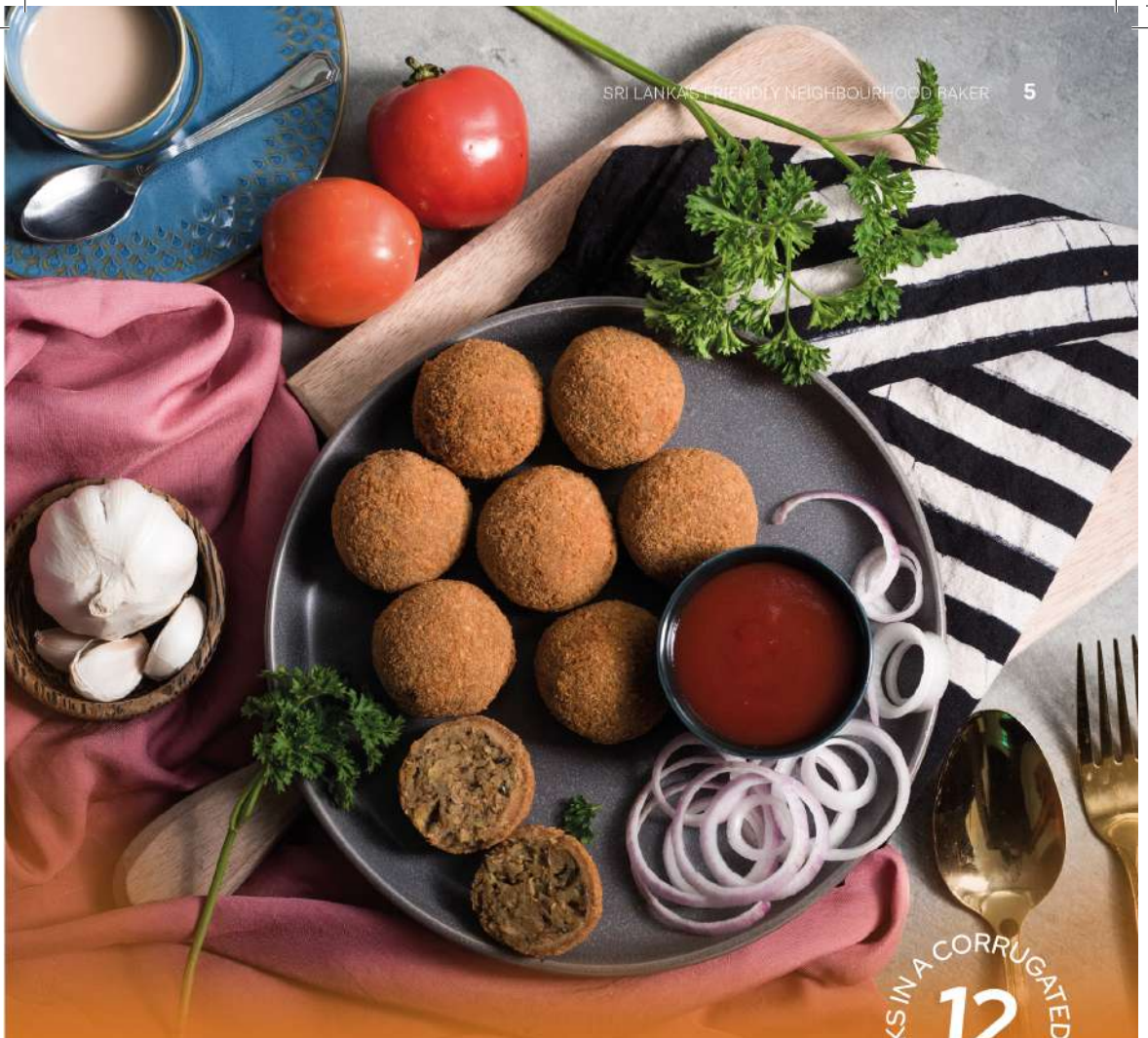
Wheat flour, Water, Coconut, Onion, Green chillies,
Margarine (plant based), Iodized salt, Curry leaves

SHELF LIFE : 24 Months

NET WEIGHT : 300g | 10.6oz

PACKS IN A CORRUGATED CARTON
45





FISH CUTLET

9 PIECES

INGREDIENTS:

Potato, Fish, Water, Onion, Vegetable oil, Wheat flour, Pepper powder, Iodized salt, Potato powder, Garlic, Soy sauce, Green chillies, Mint leaves, Cumin seeds, Chilli pieces, Curry powder, Curry leaves, Pandan leaves, Egg powder, Corn flour, Cinnamon quills

SHELF LIFE : 24 Months

NET WEIGHT : 454g | 16.0oz

12
PACKS IN A CORRUGATED CARTON





FISH ROTTI

6 PIECES

INGREDIENTS:

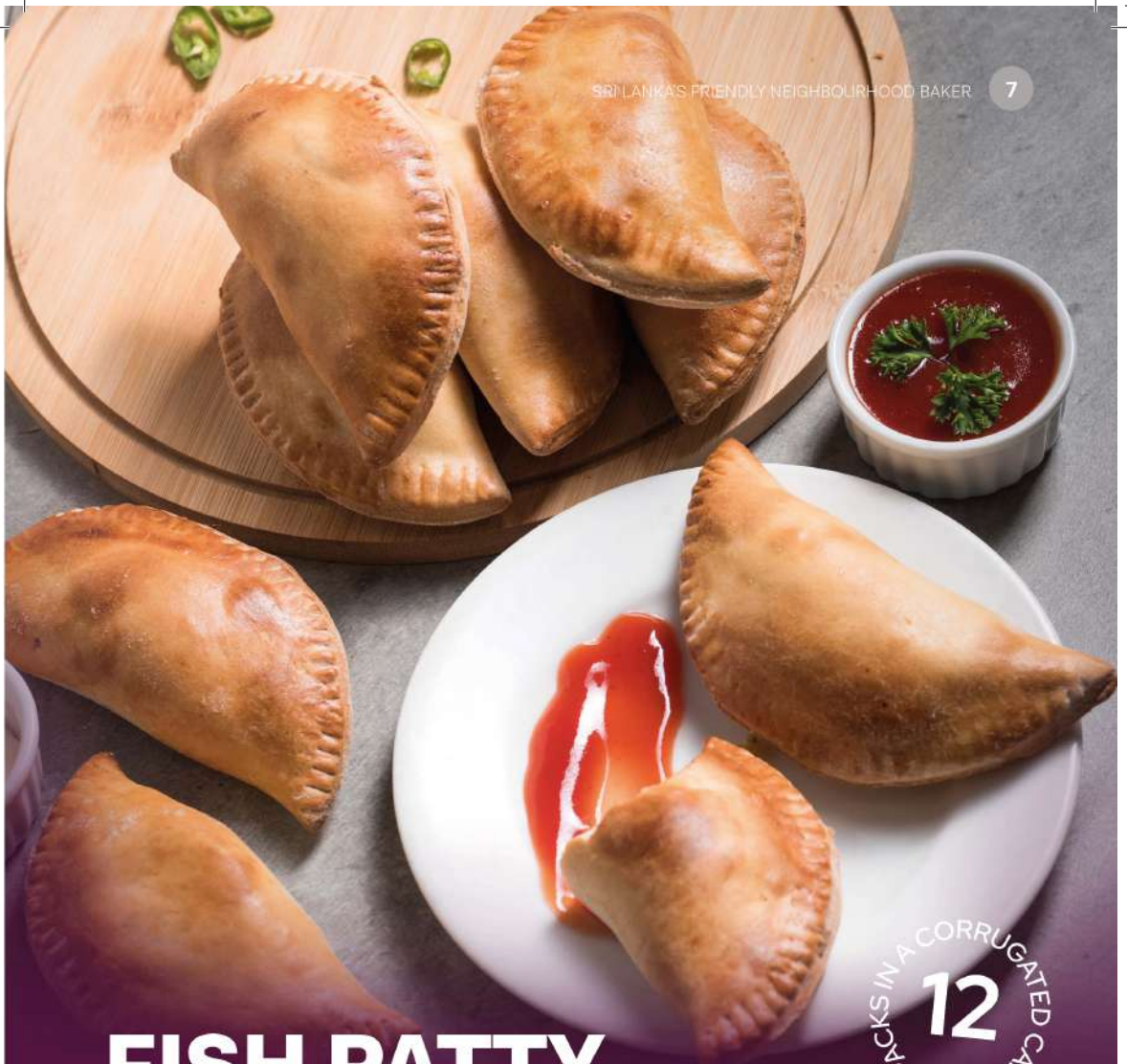
Wheat flour, Potato, Fish, Water, Leeks, Cabbage, Onion, Vegetable oil, Potato powder, Iodized salt, Chilli pieces, Curry powder, Curry leaves, Pandan leaves, Turmeric powder, Pepper powder

SHELF LIFE : 24 Months

NET WEIGHT : 454g | 16.0oz

PACKS IN A CORRUGATED CARTON
12





FISH PATTY

9 PIECES

INGREDIENTS:

Wheat flour, Vegetable oil, Water, Margarine (Plant based), Fish, Onion, Iodized salt, Sugar, Garlic, Pepper powder, Chilli pieces, Turmeric powder, Cinnamon quills, Mustard seeds, Curry leaves, Egg powder, Pandan leaves, Curry powder

SHELF LIFE : 24 Months

NET WEIGHT : 454g | 16.0oz

12
PACKS IN A CORRUGATED CARTON



FISH BUN

6 PIECES

INGREDIENTS:

Wheat Flour, Potato, Water, Fish, Vegetable oil, Onion, Margarine (Plant Based), Sugar, Iodized salt, Soy Sauce, Yeast, Egg Powder, Garlic, Pepper, Chilli pieces, Ginger, Chilli Powder, Pandan leaves, Curry powder, Curry leaves, Cinnamon quills, Turmeric powder

SHELF LIFE : 24 Months

NET WEIGHT : 454g | 16.0oz

PACKS IN A CORRUGATED CARTON
12



CHOCOLATE ÉCLAIRS

4 PIECES

INGREDIENTS:

Egg powder, Water, Wheat flour, Margarine (Plant based), Icing sugar, Chocolate, Milk powder, Cocoa powder, Corn oil, Permitted food preservative (INS 281), Nature identical chocolate flavour

SHELF LIFE : 24 Months

NET WEIGHT : 300g | 10.6oz

PACKS IN A CORRUGATED CARTON
12





FISH ROLL
12 PIECES



FISH PATTY
12 PIECES



FISH CUTLET
12 PIECES

PARTY PLATTER

36 PIECES

INGREDIENTS:

Fish Patty

Wheat flour, Vegetable oil, Water, Margarine (Plant based), Fish, Onion, Iodized salt, Sugar, Garlic, Pepper powder, Chilli pieces, Turmeric powder, Cinnamon quills, Mustard seeds, Curry leaves, Egg powder, Pandan leaves, Curry powder

Fish Cutlet

Potato, Fish, Water, Onion, Vegetable oil, Wheat flour, Pepper powder, Iodized salt, Potato powder, Garlic, Soy sauce, Green chillies, Mint leaves, Cumin seeds, Chilli pieces, Curry powder, Curry leaves, Pandan leaves, Egg powder, Corn flour, Cinnamon quills

Fish Roll

Wheat flour, Water, Potato, Fish, Vegetable oil, Iodized salt, Tomato, Garlic, Onion, Ginger, Chilli powder, Green chillies, Egg powder, Curry powder, Lemon grass, Pandan leaves

PACKS IN A CORRUGATED CARTON
12



SHELF LIFE : 24 Months

NET WEIGHT : 875g | 30.9oz



PRAWN ROLLS

9 PIECES

INGREDIENTS:

Wheat flour, Prawns, Water, Vegetable oil, Potato, Onion, Leeks, Egg powder, Tomato, Iodized salt, Green Chiles, Garlic, Pepper powder, Chilli powder, Turmeric powder, Corn flour

SHELF LIFE : 24 Months

NET WEIGHT : 454g | 16oz

PACKS IN A CORRUGATED CARTON
12



PAN BREAD

2 PIECES

INGREDIENTS:

Wheat Flour, Vegetable oil, Water, Sugar, Margarine (Plant based), Iodized salt, Milk powder, Yeast, Bread improvers (INS 300, INS 481, INS 1100), Permitted food preservative (INS 282)

SHELF LIFE : 24 Months

NET WEIGHT : 600g | 21.2oz

10
PACKS IN A CORRUGATED CARTON





12
• BACKS IN A CORRUGATED CARTON

ROASTED BREAD

6 PIECES

INGREDIENTS:

Wheat flour, Vegetable oil, Water, Sugar, Margarine (Plant based), Iodized salt, Milk powder, Yeast, Bread improvers (INS 300, INS 481, INS 1100), Permitted food preservative (INS 282)

SHELF LIFE : 24 Months

NET WEIGHT : 600g | 21.2oz and 510g | 17.9oz



SEENI SAMBOL BUN

6 PIECES

INGREDIENTS:

Onion, Wheat flour, Water, Sugar, Margarine (Plant based), Egg powder, Vegetable oil, Chilli pieces, Iodized salt, Tamarind, Yeast, Garlic, Ginger, Cinnamon quills, Curry leaves, Pandan leaves, Cardamom, Cloves

SHELF LIFE : 24 Months

NET WEIGHT : 454g | 16.0oz





800g - 28.2oz
6 PACKS IN A CORRUGATED CARTON

400g - 14.1oz
9 PACKS IN A CORRUGATED CARTON

DUTCH BREUDHER

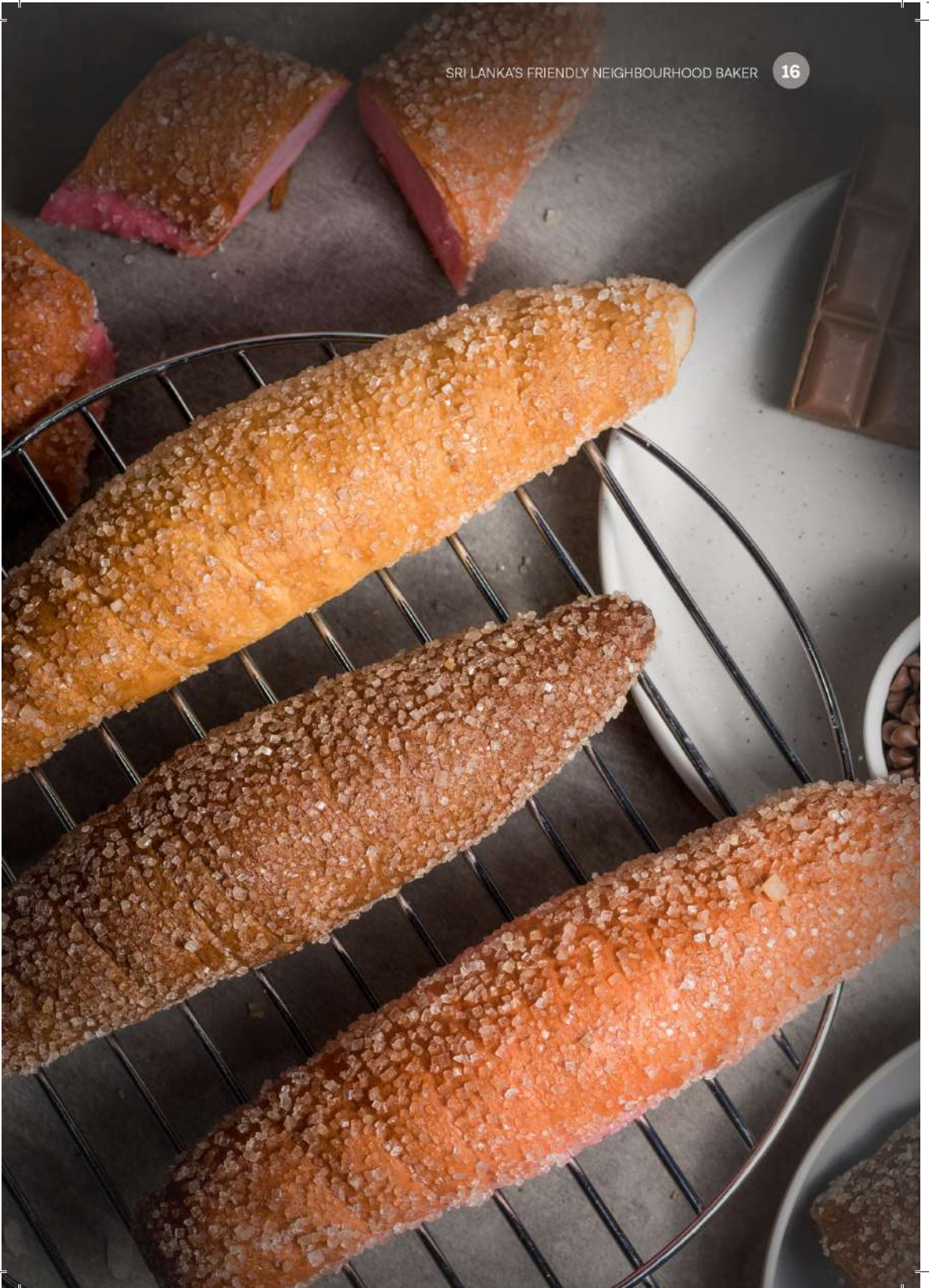
INGREDIENTS:

Wheat flour, Water, Sugar, Raisin, Margarine (Plant based), Candied peel, Egg powder, Sugar syrup, Iodized salt, Spice powder (Cinnamon, Cardamom, Cloves), Yeast, Nutmeg powder, Nature identical (Rose & Vanilla) flavours, Permitted food preservative (INS 282), Food emulsifier (INS 481)

SHELF LIFE : 24 Months

NET WEIGHT : 800g | 28.2oz and 400g | 14.1oz





VIENNA ROLL

6 PIECES

INGREDIENTS:

Wheat flour, Water, Sugar, Vegetable oil, Margarine (Plant based), Iodized salt, Milk powder, Yeast

SHELF LIFE : 24 Months

NET WEIGHT : 454g | 16.0oz

PACKS IN A CORRUGATED CARTON
10



PACKS IN A CORRUGATED CARTON
10



VIENNA ROLL

CHOCOLATE FLAVOURED

6 PIECES

INGREDIENTS:

Wheat flour, Water, Sugar, Margarine (Plant based), Vegetable oil, Cocoa powder, Nature identical chocolate flavour, Iodized salt, Milk powder, Yeast, Food emulsifier (INS 481)

SHELF LIFE : 24 Months

NET WEIGHT : 454g | 16.0oz

PACKS IN A CORRUGATED CARTON
10



VIENNA ROLL

STRAWBERRY FLAVOURED

6 PIECES

INGREDIENTS:

Wheat flour, Water, Sugar, Margarine (Plant based), Vegetable oil, Iodized salt, Milk powder, Yeast, Permitted food colour (INS 127), Nature identical strawberry flavour, Food emulsifier (INS 481)

SHELF LIFE : 24 Months

NET WEIGHT : 454g | 16.0oz

FISH LAMPRAIS

INGREDIENTS:

Rice, Vegetable oil, Fish, Onion, Garlic, Chilli powder, Ginger, Iodized salt, Brinjal, Tomato, Ash plantain, Pepper pieces, Potato, Turmeric powder, Sugar, Curry powder, Soy sauce, Coconut, Corn flour, Coriander, Water, Chicken flavoured seasoning powder, Chilli pieces, Lemon grass, Curry leaves, Tamarind, Green chillies, Pandan leaves, Cinnamon quills, Cloves, Cardamom, Wheat flour, Cumin seeds

SHELF LIFE : 24 Months

NET WEIGHT : 550g | 19.4oz

PACKS IN A CORRUGATED CARTON
20



KOTTU ROTTI PIECES

INGREDIENTS:

Wheat flour, Water, Iodized salt

SHELF LIFE : 24 Months

NET WEIGHT : 454g | 16.0oz

NET WEIGHT : 1kg | 35.3oz

NET WEIGHT : 3kg | 105.8oz

NET WEIGHT : 5kg | 176.4oz

454g - 16.0oz
18
PACKS IN A CORRUGATED CARTON

1kg - 35.3oz
8
PACKS IN A CORRUGATED CARTON





DRY SEENI SAMBOL

INGREDIENTS:

Onions, Vegetable oil, Sugar, Maldive fish, Garlic, Chilli pieces, Lime juice, Iodized salt, Ginger, Curry leaves, Pandan leaves, Pepper powder, Cardamom, Cloves, Turmeric powder, Permitted food preservative (INS 223)

SHELF LIFE : 12 Months

NET WEIGHT : 200g | 7.1oz

PACKS IN A CORRUGATED CARTON • **24**



FISH CRUNCHI

12 PIECES

12
PIECES IN A CORRUGATED CARTON

INGREDIENTS:

Wheat flour, Fish, Water, Onion, Potato, Margarine (Plant based), Egg powder, Milk powder, Vegetable oil, Iodized salt, Green chilli, Garlic, Soy sauce, Pepper pieces, Leavening agent (INS 450 (i) INS 500 (ii)), Chilli powder, Mustard seeds, Curry powder, Chilli pieces

SHELF LIFE : 24 Months

NET WEIGHT : 300g | 10.6oz





VEGE RANGE



VEGETABLE PATTY

9 PIECES

INGREDIENTS:

Wheat Flour, Potato, Vegetable oil, Water, Carrot, Margarine (Plant based), Onion, Sugar, Green peas, Iodized salt, Potato powder, Pepper powder, Garlic, Turmeric powder, Fenugreek, Pandan leaves, Egg powder, Cinnamon quills, Curry leaves

SHELF LIFE : 24 Months

NET WEIGHT : 454g | 16.0oz

PACKS IN A CORRUGATED CARTON • 12





VEGETABLE ROTTI

6 PIECES

INGREDIENTS:

Potato, Wheat flour, Water, Leeks, Onion, Cabbage, Vegetable oil, Potato powder, Iodized salt, Pepper pieces, Chilli pieces, Curry powder, Cumin seeds, Mustard seeds, Curry leaves, Pandan leaves, Turmeric powder

SHELF LIFE : 24 Months

NET WEIGHT : 454g | 16.0oz

PACKS IN A CORRUGATED CARTON
12





VEGETABLE CUTLET

9 PIECES

12
• PACKS IN A CORRUGATED CARTON •

INGREDIENTS:

Potato, Vegetable oil, Carrot, Bean, Wheat flour, Potato powder, Garlic, Iodized salt, Cumin seeds, Pepper powder, Chilli pieces, Turmeric powder, Curry leaves, Pandan leaves, Corn flour

SHELF LIFE : 24 Months

NET WEIGHT : 454g | 16.0oz





VEGETABLE ROLL
12 PIECES



VEGETABLE PATTY
12 PIECES



VEGETABLE CUTLET
12 PIECES

VEGETABLE PARTY PLATTER

36 PIECES

INGREDIENTS:

Vegetable Roll

Wheat flour, Water, Potato, Carrot, Beans, Iodized salt, Vegetable oil, Milk powder, Pepper powder, Chilli pieces, Curry leaves, Cumin seeds, Cinnamon quills, Garlic, Corn flour, Pandan leaves

Vegetable Patty

Wheat flour, Potato, Vegetable oil, Water, Carrot, Margarine (Plant based), Onion, Sugar, Green peas, Iodized salt, Potato powder, Pepper powder, Garlic, Turmeric powder, Fenugreek, Pandan leaves, Cinnamon quills, Curry leaves

Vegetable Cutlet

Potato, Vegetable oil, Carrot, Bean, Wheat flour, Water, Potato powder, Garlic, Iodized salt, Cumin seeds, Pepper powder, Chilli pieces, Turmeric powder, Curry leaves, Pandan leaves, Corn flour

PACKS IN A CORRUGATED CARTON
12



SHELF LIFE : 24 Months

NET WEIGHT : 875g | 30.9oz



VEGETABLE ROLLS

9 PIECES

INGREDIENTS:

Wheat flour, Water, Potato, Carrot, Beans, Iodized salt, Vegetable oil, Milk powder, Pepper powder, Chilli pieces, Curry leaves, Cumin seeds, Cinnamon quills, Garlic, Corn flour, Pandan leaves

SHELF LIFE : 24 Months

NET WEIGHT : 454g | 16.0oz

12
PACKS IN A CORRUGATED CARTON





CAKES



DATE CAKE

INGREDIENTS:

Dates, Water, Wheat flour, Egg powder, Vegetable oil, Sugar, Cashew ,
Leavening agents (INS 450 (i) , INS 500 (ii)) , Margarine (Plant based) ,
Cake improvers (INS 420 (i) , INS 422, INS 470 (i) , INS 471, INS 1520)

SHELF LIFE : 24 Months

NET WEIGHT : 500g | 17.6oz

6
PACKS IN A CORRUGATED CARTON



CHOCOLATE GANACHE CAKE

INGREDIENTS:

Cake Base Ingredients - Egg powder, Wheat flour, Sugar, Water, Cocoa powder, Corn oil, Cake improvers (INS 420(1), INS 470(1), INS 471, INS 475, INS 1520), Leavening agents (INS 450(ii), INS 500(ii)), Permitted food preservative (INS 202)

Icing Ingredients - Icing sugar, Margarine (Plant based), Chocolate, Cocoa powder, Water, Milk powder, Permitted food preservative (INS 281), Nature identical chocolate flavour

SHELF LIFE : 24 Months

NET WEIGHT : 500g | 17.6oz

6
PACKS IN A CORRUGATED CARTON





PINEAPPLE GATEAU CAKE

INGREDIENTS:

Cake Base Ingredients - Wheat flour, Margarine (Plant based), Egg powder, Sugar, Water, Leavening agents (INS 450(i), INS 500(ii)), Milk powder, Permitted food preservative (INS 202), Nature identical vanilla flavour, Iodized salt

Icing Ingredients - Pineapple, Icing sugar, Margarine (Plant based), Sugar, Glazing agents (Glucose - Fructose syrup, Saccharose) Cherries, Water, Permitted food colours (INS 102, INS 110, INS 124), Nature identical (Pineapple and Vanilla) flavours, Permitted food preservatives (INS 281, INS 330)

SHELF LIFE : 24 Months

NET WEIGHT : 800g | 28.2oz

6
PACKS IN A CORRUGATED CARTON





PACKS IN A CORRUGATED CARTON
25

CHOCOLATE ROLL

INGREDIENTS:

Egg powder, Sugar, Wheat flour, Icing sugar, Margarine (Plant based), Water, Vegetable oil, Cocoa powder, Cake improvers (INS 420(i), INS 422, INS 470(i), INS 471, INS 1520), Leavening agents (INS 450(i), INS 500 (ii)), Permitted food colour (INS 150d), Permitted food preservatives (INS 202, INS 281), Food emulsifier (Soy lecithin - INS 322), Nature identical chocolate flavour



SHELF LIFE : 24 Months

NET WEIGHT : 325g | 11.4oz



OPERA CAKE

1 PIECE

INGREDIENTS:

Chocolate, Egg powder, Sugar, Wheat flour, Milk powder, Water, Glucose, Corn oil, Vegetable oil, Cake improvers (INS 422, INS 471, INS 1520), Icing sugar, Corn flour, Coffee powder, Cocoa powder, Leavening agents (INS 450(i), INS 500(ii))

SHELF LIFE : 24 Months

NET WEIGHT : 80g | 2.8oz

PACKS IN A CORRUGATED CARTON
24





COFFEE CAKE

1 PIECE

INGREDIENTS:

Margarine (Plant based), Sugar, Egg powder, Wheat flour, Icing sugar, Milk powder, Water, Chocolate, Coffee powder, Nature identical vanilla flavour, Leavening agent (INS 450 (i), INS 500 (ii)), Permitted food preservative (INS 281)

SHELF LIFE : 24 Months

NET WEIGHT : 75g | 2.6oz

PACKS IN A CORRUGATED CARTON
24





RIBBON CAKE

1 PIECE

INGREDIENTS:

Margarine (Plant based), Wheat flour, Egg powder, Sugar, Icing sugar, Milk powder, Leavening agent (INS 450 (i), INS (500 (ii)), Nature identical vanilla flavour, Iodized salt, Water, Cake improvers (INS 422, INS 471, INS 1520), Permitted food colours (INS 102, INS 127, INS 133), Food stabilizer (INS 415), Permitted food preservative (INS 281)

SHELF LIFE : 24 Months

NET WEIGHT : 80g | 2.8oz

PACKS IN A CORRUGATED CARTON
24





YULE LOG

PACKS IN A CORRUGATED CARTON
6

INGREDIENTS:

Egg powder, Icing sugar, Sugar, Wheat flour, Margarine (Plant based), Water, Vegetable oil, Cocoa powder, Chocolate, Cake improvers (INS 420(i), INS 422, INS 470(i), INS 471, INS 1520), Milk powder, Leavening agents (INS 450(i), INS 500(ii)), Permitted food colour (INS 150d), Permitted food preservatives (INS 202, INS 281), Food emulsifier (Soy lecithin (INS 322)), Nature identical (Chocolate and Vanilla) flavours

SHELF LIFE : 24 Months

NET WEIGHT : 900g | 31.7oz



CASHEW CUP CAKE

12 PIECE

12
PIECES IN A CORRUGATED CARTON

INGREDIENTS:

Wheat flour, Sugar, Water, Vegetable oil, Egg powder, Margarine (Plant based), Cashew, Glucose, Pumpkin preserve, Semolina, Icing sugar, Cake improvers (INS 420 (i), INS 422, IN 470 (i), INS 471, INS 1520), Sugar syrup, Leavening agents (INS 450 (i), INS 500 (iii)), Nature identical (Rose

SHELF LIFE : 24 Months

NET WEIGHT : 360g | 12.7oz



BETEL LEAF SHAPED CAKE

INGREDIENTS:

Sugar, Wheat flour, Egg powder, Margarine (Plant based), Icing sugar, Glucose, Water, Milk powder, Leavening agent (INS 450 (i), INS 500 (ii)), Corn oil, Food stabilizer (INS 466), Iodized salt, Nature identical vanilla flavour, Permitted food colours (INS 102, INS 110, INS 127, INS 133)

SHELF LIFE : 24 Months

NET WEIGHT : 600g | 21.2oz

NET WEIGHT : 400g | 14.1oz

6
PACKS IN A CORRUGATED CARTON





BISCUITS



ASSORTED COOKIES TIN

INGREDIENTS:

Wheat flour, Sugar, Margarine (Plant based), Corn flour , Water , Milk powder, Icing sugar, Egg powder, Chocolate, Cashew, Strawberry flavoured jam, Cocoa powder, Sesame, Iodized salt, Leavening agents (INS 500 (ii), INS 503), Spice powder (Nutmeg, Cardamom, Cloves, Cinnamon), Nature identical (Vanilla, Chocolate and butter) flavours, Sugar syrup, Coffee powder, Food emulsifier (Soy lecithin - INS 322), Permitted food preservative, Permitted food colours (INS 102, INS 110, INS 124, INS 133)

PACKS IN A CORRUGATED CARTON
6



SHELF LIFE : 12 Months

NET WEIGHT : 350g | 12.3oz



45
PACKS IN A CORRUGATED CARTON

RULANG COOKIES

10 PIECES

INGREDIENTS:

Wheat flour, Sugar, Water, Desiccated coconut, Semolina, Milk powder, Margarine (Plant based), Iodized salt, Cumin seeds, Permitted food preservative (INS 202)

SHELF LIFE : 24 Months

NET WEIGHT : 180g | 6.3oz





ANODA FLOWER SHAPED CRUNCH

PACKS IN A CORRUGATED CARTON • 25

INGREDIENTS:

Wheat flour, Water, Sugar, Vegetable oil, Iodized salt, Permitted food preservative (INS 202)

SHELF LIFE : 24 Months

NET WEIGHT : 200g | 7.1oz





WINE BISCUITS

PACKS IN A CORRUGATED CARTON
28

INGREDIENTS:

Wheat flour, Egg powder, Sugar, Spice powder
(Nutmeg, Cardamom, Cloves, Cinnamon),
Permitted food preservative (INS 202)

SHELF LIFE : 24 Months

NET WEIGHT : 150g | 5.3oz





TRADITIONAL SWEETS



12
PACKS IN A CORRUGATED CARTON

HELAPA

6 PIECES

INGREDIENTS:

Finger millet flour, Kurakkan flour, Sugar, Coconut, Wheat flour Vegetable oil, Iodized salt, Cumin seeds

SHELF LIFE : 24 Months

NET WEIGHT : 300g | 10.6oz



AASMI

2 PIECES

INGREDIENTS:

Rice flour, Water, Vegetable oil, Sugar, Cinnamon leave extract, Iodized salt

SHELF LIFE : 24 Months

NET WEIGHT : 120g | 4.2oz

PACKS IN A CORRUGATED CARTON
15



ATHIRASA

12 PIECES

INGREDIENTS:

Rice flour, Wheat flour, Coconut Treacle, Coconut oil, Sago, Fennel seeds

SHELF LIFE : 24 Months

NET WEIGHT : 420g | 14.8oz

PACKS IN A CORRUGATED CARTON
12



KOKIS

12 PIECES

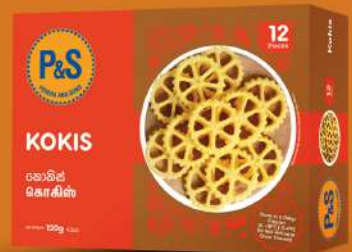
INGREDIENTS:

Rice flour, Coconut milk, Coconut oil, Egg powder

SHELF LIFE : 24 Months

NET WEIGHT : 120g | 4.24oz

PACKS IN A CORRUGATED CARTON • 12





MUNG KEVUM

12 PIECES

INGREDIENTS:

Green gram flour, Rice flour, Wheat flour, Coconut treacle,
Coconut, Coconut oil, Turmeric powder

SHELF LIFE : 24 Months

NET WEIGHT : 420g | 14.8oz

PACKS IN A CORRUGATED CARTON
12



12
PACKS IN A CORRUGATED CARTON

KONDA KEVUM

12 PIECES

INGREDIENTS:

Rice flour, Wheat flour, Coconut treacle, Coconut oil, Sugar

SHELF LIFE : 24 Months

NET WEIGHT : 540g | 19.04oz





Elevating Communities,
Enriching Lives



SUSTAINABLE
DEVELOPMENT GOALS





P&S

PERERA AND SONS

**WHERE QUALITY
MEETS FLAVOUR**

Perera & Sons Bakers (Pvt) Ltd.

TEL : +94 11 4786386
FAX : +94 11 2792555

122-124, M.D.H Jayawardena Mawatha,
Madinagoda, Rajagiriya, Sri Lanka

WEB : www.pereraandsons.com
E-MAIL : exports@pereraandsons.com



✕    
at [pereraandsons](http://pereraandsons.com)

